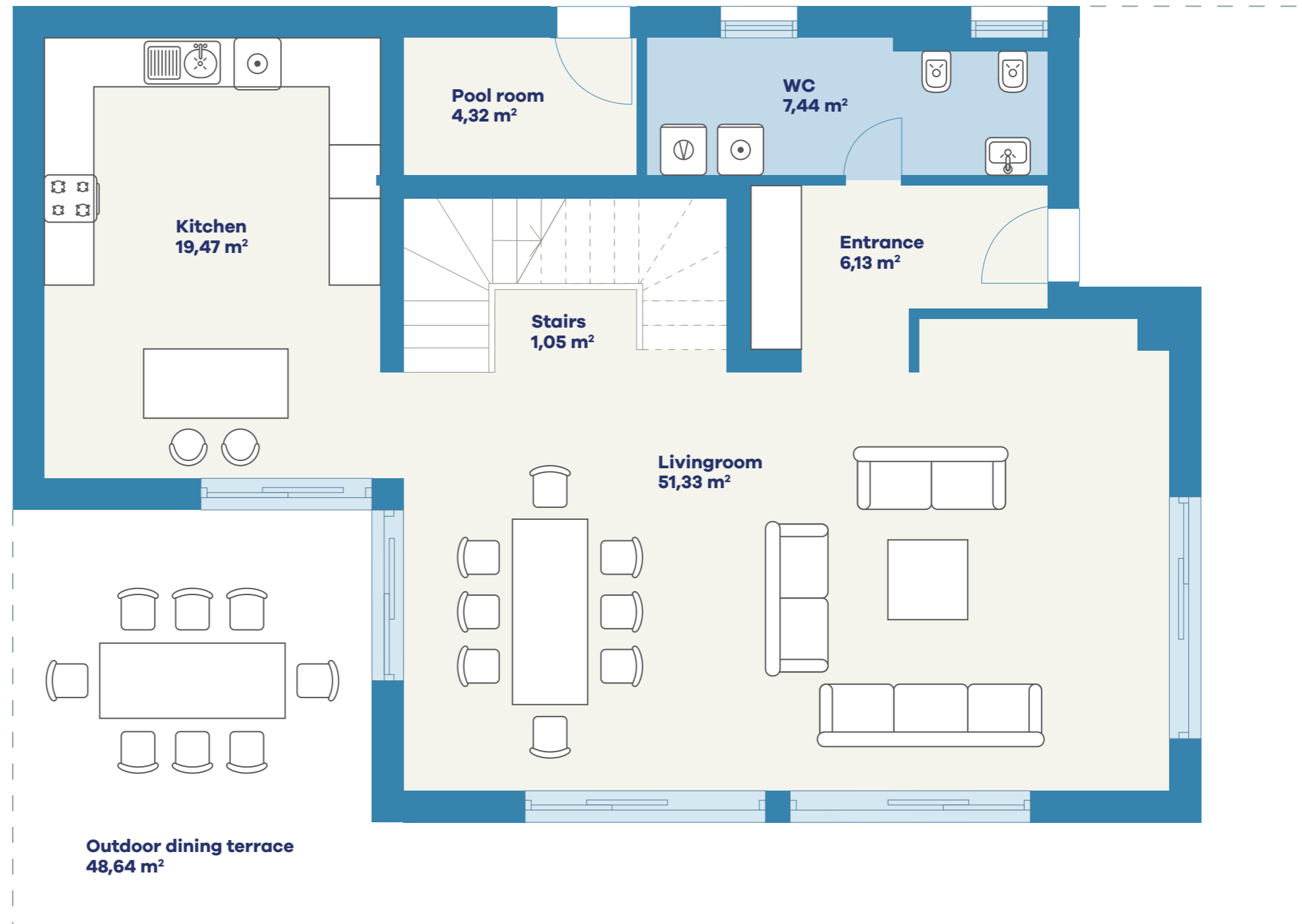


VINIŠĆE RUŽMARIN

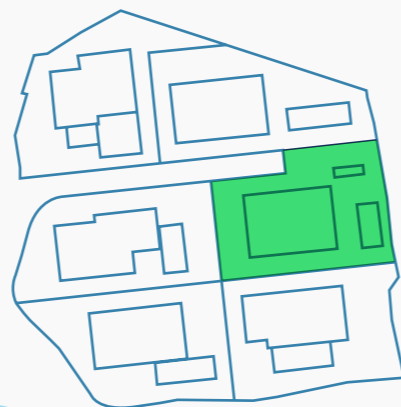
GROUND FLOOR

Entrance	6,13 m ²
Livingroom	51,33 m ²
Stairs	1,05 m ²
Kitchen	19,47 m ²
Pool room	4,32 m ²
WC	7,44 m ²
Outdoor dining terrace	48,64 m ²

LIVING AREA
138,38 m²



VINIŠĆE BAY
LIVING



Adriatic
Sea

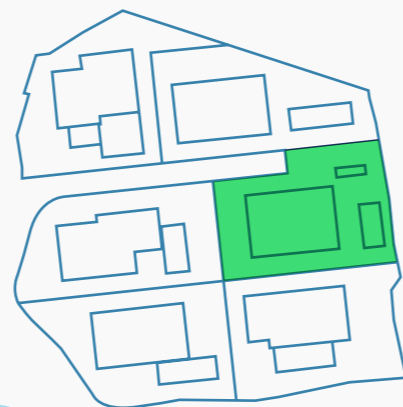
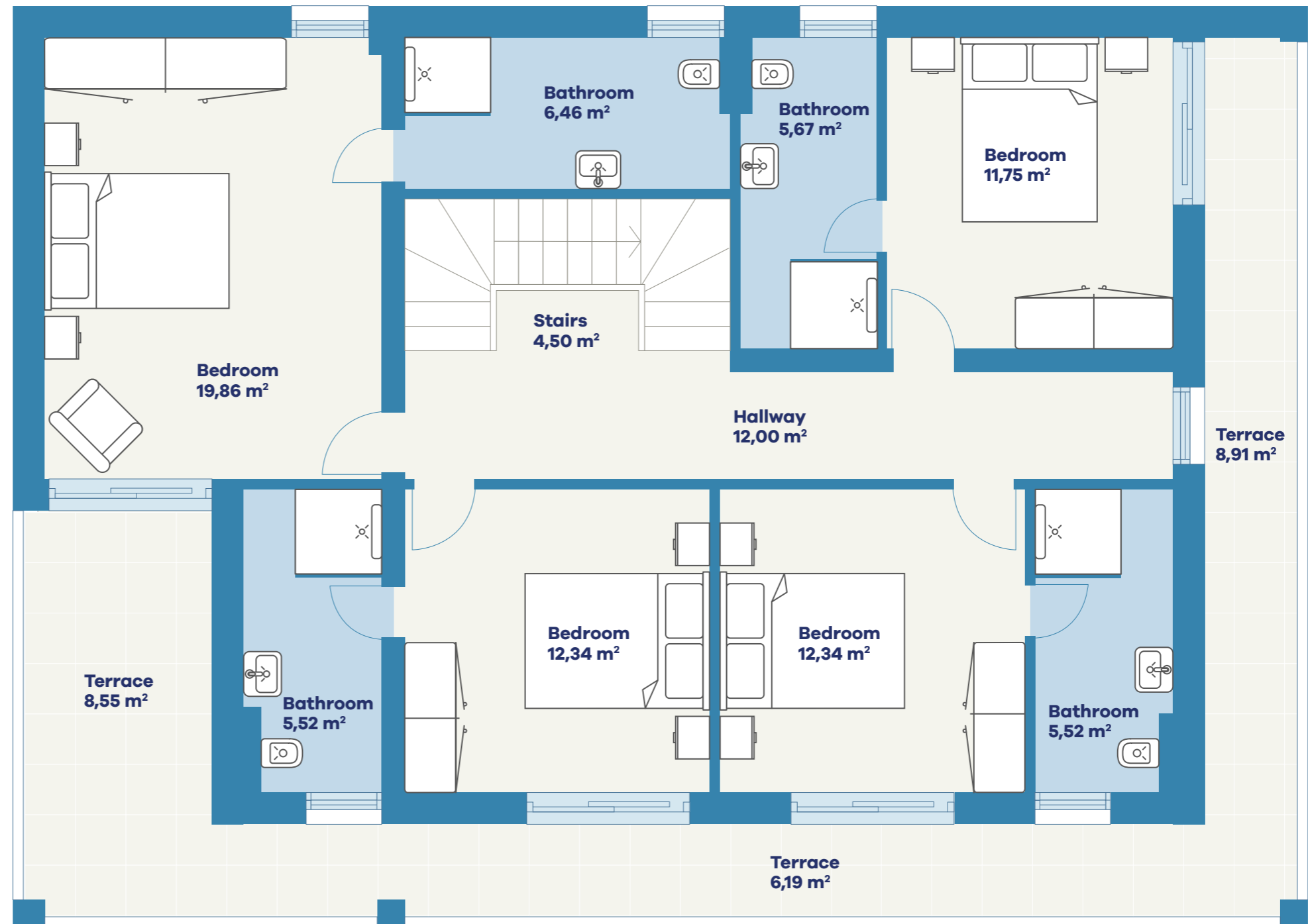
Furnishings are not an object of purchase and are for illustration purposes only. Floor and wall coverings, electrical, sanitary and other equipment according to the valid construction and equipment description. The room and apartment sizes are approximate and may change slightly due to detailed planning. The dimensions given in the plans are shell dimensions and cannot be used for ordering built-in furniture - natural dimensions required! Additional drop ceilings and poteries as required. Structurally necessary changes have no influence on the agreed purchase price. Non-binding plan copy, misprints, mistakes or changes reserved.

www.vinisceliving.com

VINIŠĆE RUŽMARIN TOP FLOOR

Stairs	4,50 m ²
Hallway	12,00 m ²
Bedroom	19,86 m ²
Bedroom	11,75 m ²
Bedroom	12,34 m ²
Bedroom	12,34 m ²
Bathroom	6,46 m ²
Bathroom	5,67 m ²
Bathroom	5,52 m ²
Bathroom	5,52 m ²
Terrace	8,55 m ²
Terrace	6,19 m ²
Terrace	8,91 m ²

LIVING AREA
119,61 m²



Adriatic
Sea

Furnishings are not an object of purchase and are for illustration purposes only. Floor and wall coverings, electrical, sanitary and other equipment according to the valid construction and equipment description. The room and apartment sizes are approximate and may change slightly due to detailed planning. The dimensions given in the plans are shell dimensions and cannot be used for ordering built-in furniture - natural dimensions required! Additional drop ceilings and poteries as required. Structurally necessary changes have no influence on the agreed purchase price. Non-binding plan copy, misprints, mistakes or changes reserved.

www.vinisceliving.com