

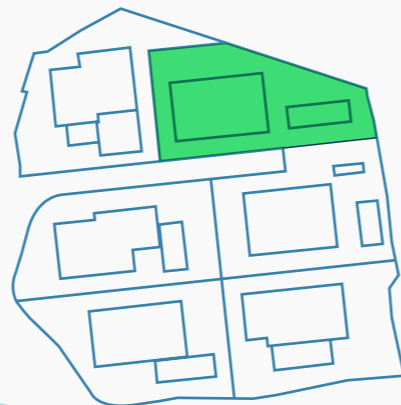
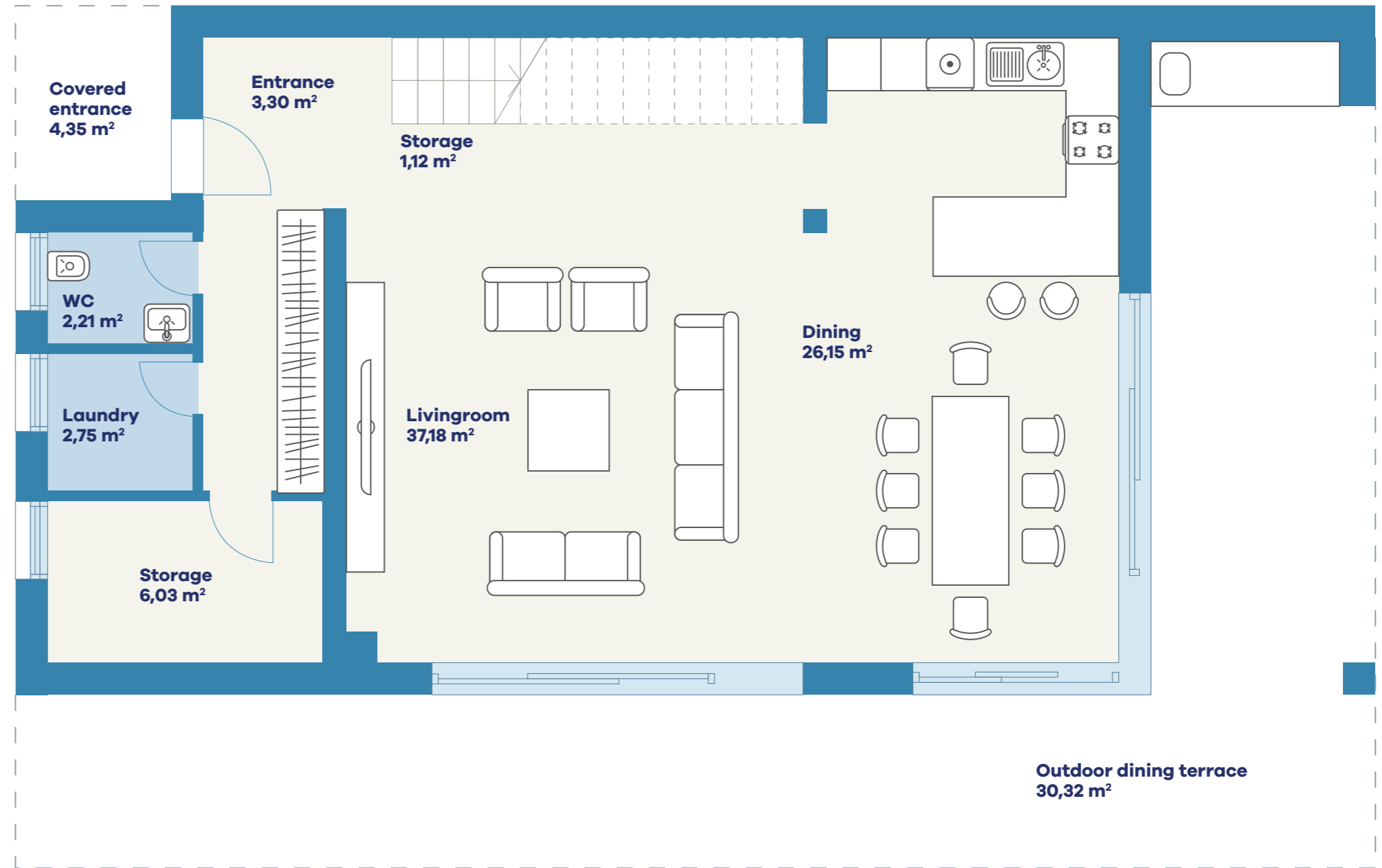
VINIŠĆE MASLINA

GROUND FLOOR

Entrance	3,30 m ²
Livingroom	37,18 m ²
Dining	26,15 m ²
Storage	1,12 m ²
Storage	6,03 m ²
Laundry	2,75 m ²
WC	2,21 m ²
Outdoor dining terrace	30,32 m ²

LIVING AREA
109,06 m²

Covered entrance 4,35 m²

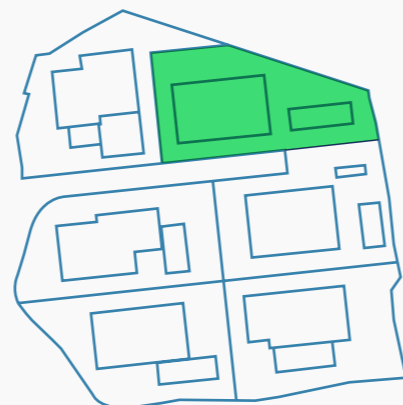
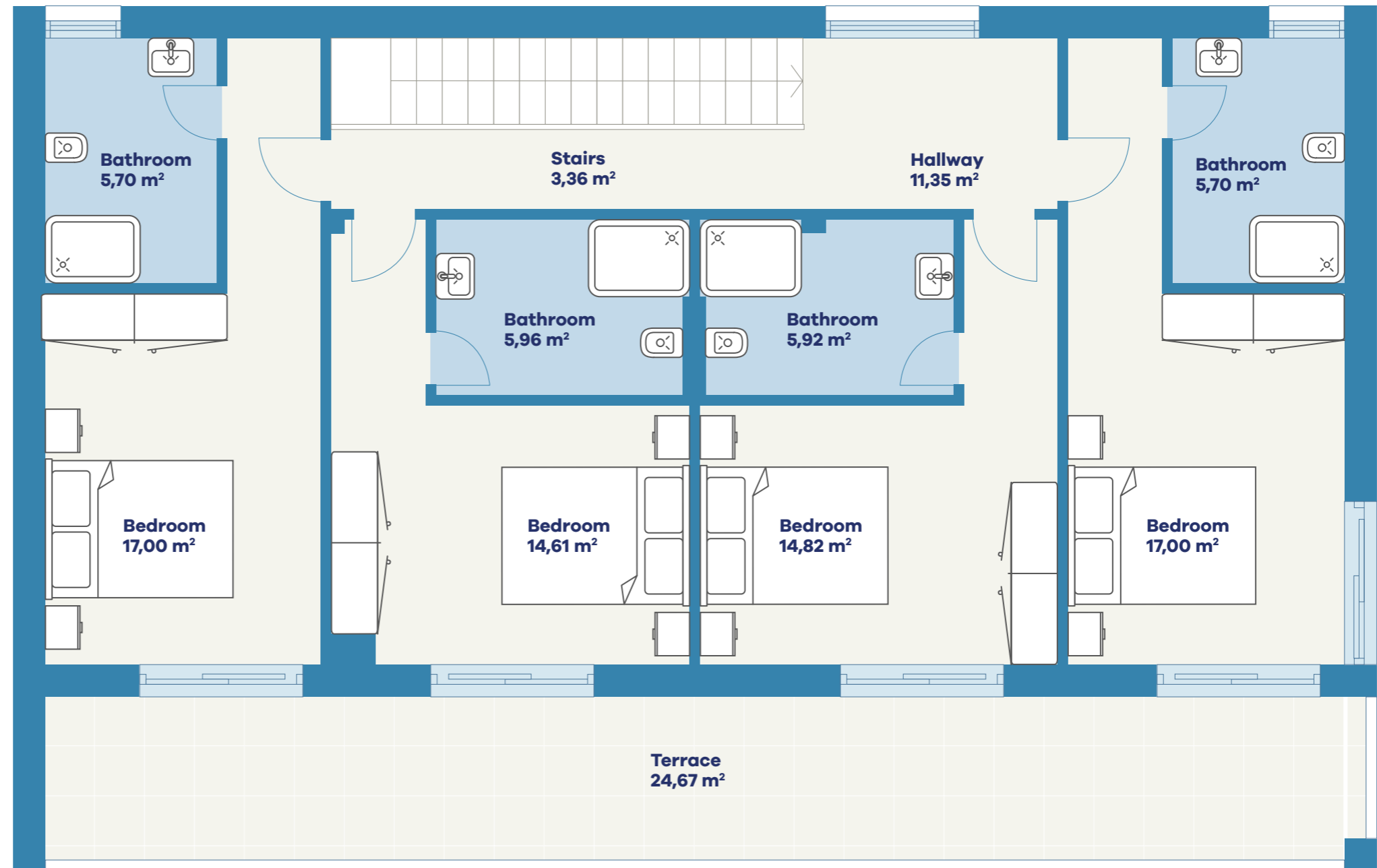


VINIŠĆE MASLINA TOP FLOOR

Stairs	3,36 m ²
Hallway	11,35 m ²
Bedroom	17,00 m ²
Bedroom	14,61 m ²
Bedroom	14,82 m ²
Bedroom	17,00 m ²
Bathroom	5,70 m ²
Bathroom	• 5,96 m ²
Bathroom	5,92 m ²
Bathroom	5,70 m ²

LIVING AREA 101,42 m²

Terrace	24,67 m ²
---------	----------------------



Adriatic
Sea

Furnishings are not an object of purchase and are for illustration purposes only. Floor and wall coverings, electrical, sanitary and other equipment according to the valid construction and equipment description. The room and apartment sizes are approximate and may change slightly due to detailed planning. The dimensions given in the plans are shell dimensions and cannot be used for ordering built-in furniture - natural dimensions required! Additional drop ceilings and poteries as required. Structurally necessary changes have no influence on the agreed purchase price. Non-binding plan copy, misprints, mistakes or changes reserved.

www.vinisceliving.com