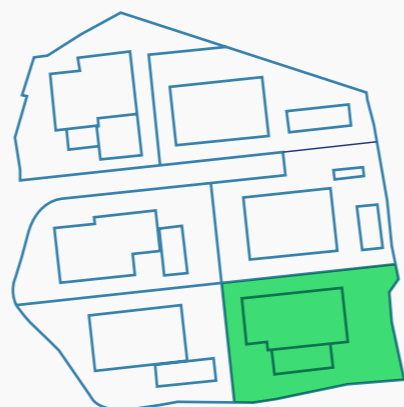
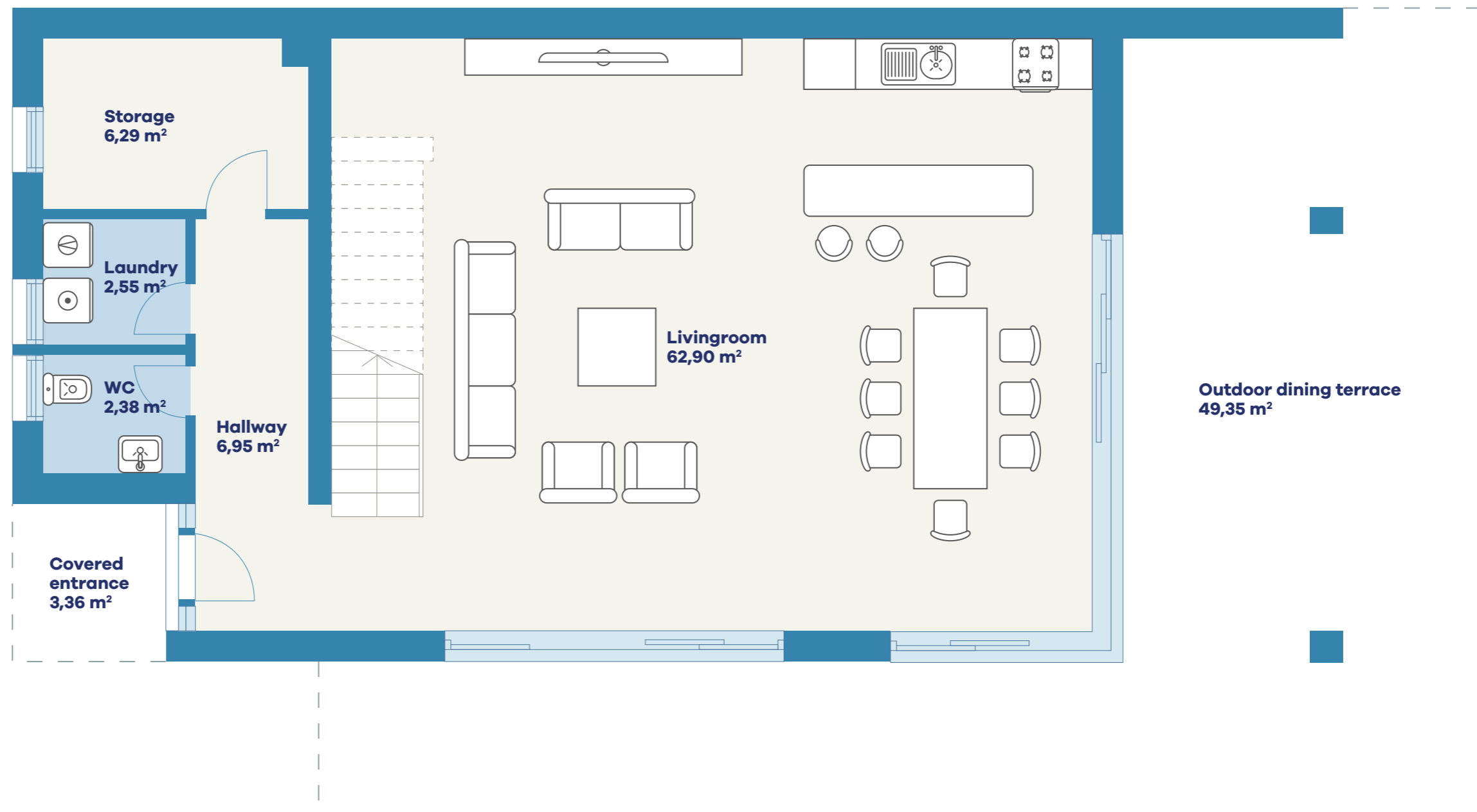


# VINIŠĆE LIMUN GROUND FLOOR

Hallway	6,95 m <sup>2</sup>
Livingroom	62,90 m <sup>2</sup>
Storage	6,29 m <sup>2</sup>
Laundry	2,55 m <sup>2</sup>
WC	2,38 m <sup>2</sup>
Outdoor dining terrace	49,35 m <sup>2</sup>

LIVING AREA  
**130,42 m<sup>2</sup>**

Covered entrance 3,36 m<sup>2</sup>

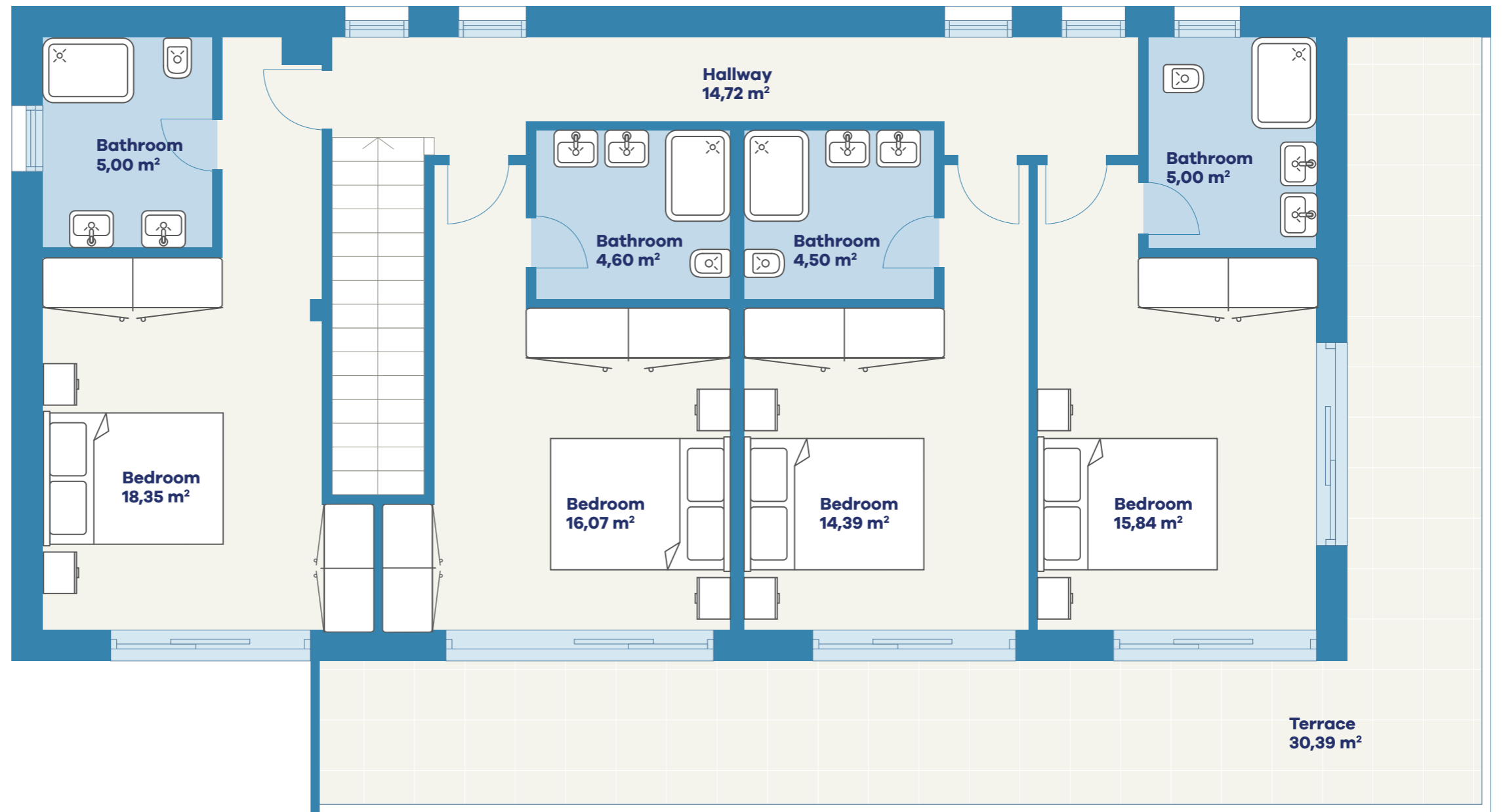


# VINIŠĆE LIMUN TOP FLOOR

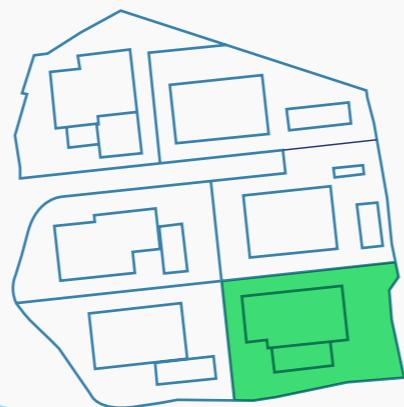
Hallway	14,72 m <sup>2</sup>
Bedroom	16,07 m <sup>2</sup>
Bedroom	14,39 m <sup>2</sup>
Bedroom	15,84 m <sup>2</sup>
Bedroom	18,35 m <sup>2</sup>
Bathroom	5,00 m <sup>2</sup>
Bathroom	4,60 m <sup>2</sup>
Bathroom	4,50 m <sup>2</sup>
Bathroom	5,00 m <sup>2</sup>

LIVING AREA  
**98,47 m<sup>2</sup>**

Terrace	30,39 m <sup>2</sup>
---------	----------------------



**VINIŠĆE BAY**  
L I V I N G



Adriatic  
Sea

Furnishings are not an object of purchase and are for illustration purposes only. Floor and wall coverings, electrical, sanitary and other equipment according to the valid construction and equipment description. The room and apartment sizes are approximate and may change slightly due to detailed planning. The dimensions given in the plans are shell dimensions and cannot be used for ordering built-in furniture - natural dimensions required! Additional drop ceilings and poteries as required. Structurally necessary changes have no influence on the agreed purchase price. Non-binding plan copy, misprints, mistakes or changes reserved.

[www.vinisceliving.com](http://www.vinisceliving.com)